



# MONTHLY MEMBERSHIP PROGRESS REPORT

District 7 N

Results as of: 06/30/2019

GMT: OPEN

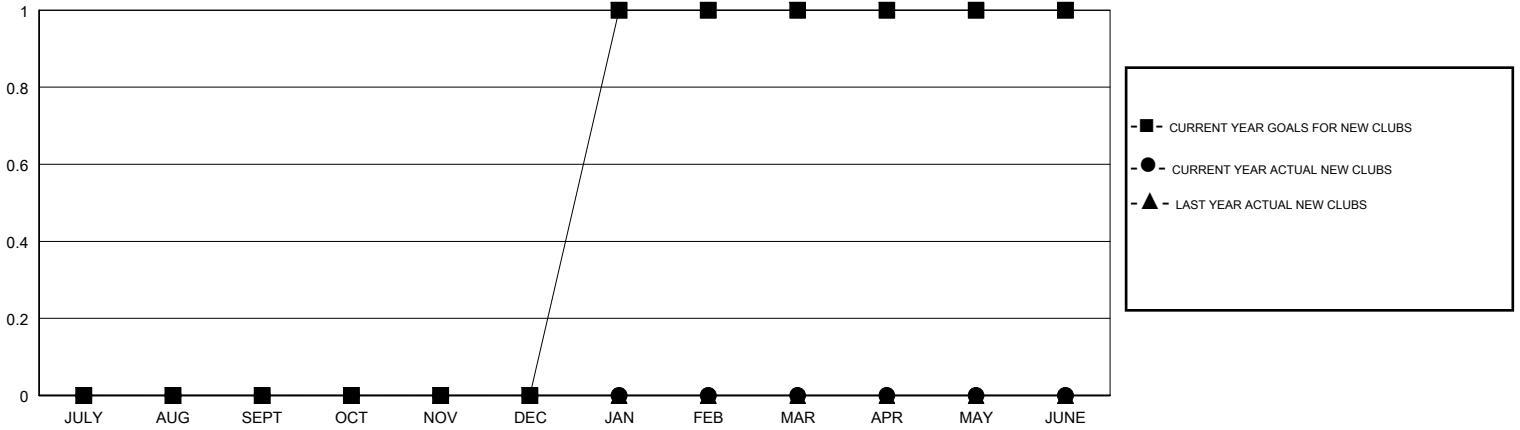
LOCATION ARKANSAS

GMT CA

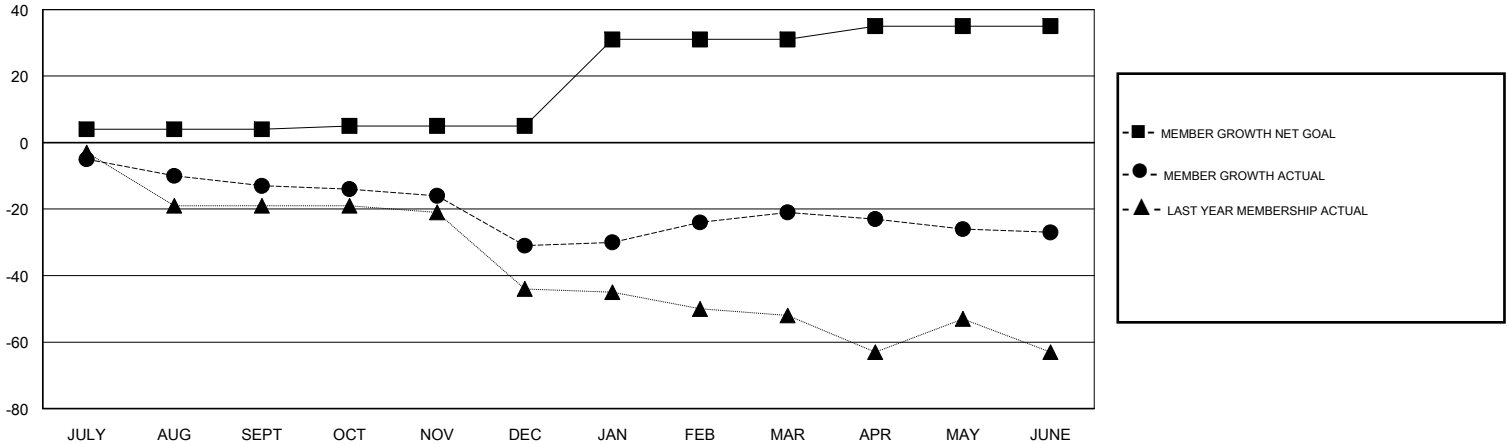
Clubs			
RESULTS FOR 2018-2019			
QUARTER	NEW CLUB GOAL	NEW CLUBS	DROPPED CLUBS
JULY/AUG/SEPT	0	0	1
OCT/NOV/DEC	0	0	0
JAN/FEB/MAR	1	0	0
APR/MAY/JUNE	0	0	0

Members			
RESULTS FOR 2018-2019			
QUARTER	MEMBER GROWTH NET GOAL	MEMBER GROWTH ACTUAL	DROPPED MEMBERS ACTUAL (including transfers)
JULY/AUG/SEPT	4	13	24
OCT/NOV/DEC	1	4	22
JAN/FEB/MAR	26	29	18
APR/MAY/JUNE	4	17	20

GOALS AND ACTUAL NEW CLUBS CUMULATIVE



GOALS AND ACTUAL MEMBERS CUMULATIVE



DROPPED CLUBS: 1	15 CLUBS OF 32 ADDED 1 OR MORE NEW MEMBERS	<u>GENDER DISTRIBUTION</u> MALE 403 (61.62%) FEMALE 251 (38.38%) Women Percentage Fiscal Year Goal: 35%
<u>DROPPED MEMBERS</u> DECEASED 7 CLUB CANCELLED 0 OTHER 77 TOTAL 84	<a href="#">CLICK HERE FOR CUMULATIVE MEMBERSHIP DATA</a>	TOTAL FAMILY UNIT MEMBERS 149 FAMILY MEMBERS PAYING HALF DUES 76